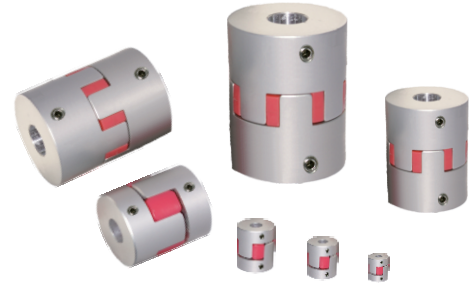


RD1-SR Series

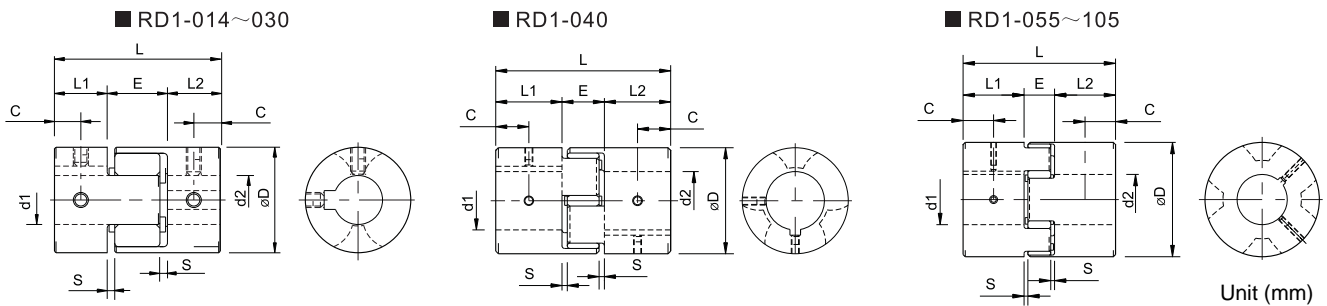
Jaw Set Screw Type



Parameters

Model	Rated Torque (N.m)	Max Torque (N.m)	Max Rotational Speed(min-1)	Static Torsional Elasticity(N.m/rad)	Parallel Stiffness (N/mm)	Moment of Inertia (kg.m ²)	Parallel Misalignment (mm)	Angular Misalignment(°)	Axial Misalignment (mm)	Weight(g)
RD1-014SR	2	4	34100	21	380	1.91x10 ⁻⁷	0.10	1	0~+0.6	7
RD1-020SR	5	10	23800	43	400	1.08x10 ⁻⁶	0.10	1	0~+0.8	18
RD1-030SR	12.5	25	15900	136	650	6.25x10 ⁻⁶	0.10	1	0~+1.0	47
RD1-040SR	17	34	11900	1550	1700	3.87x10 ⁻⁵	0.10	1	0~+1.2	150
RD1-055SR	60	120	8700	2000	1350	1.66x10 ⁻⁴	0.10	1	0~+1.4	350
RD1-065SR	160	320	7400	3100	1400	3.57x10 ⁻⁴	0.10	1	0~+1.5	510
RD1-080SR	325	650	6000	6000	1710	1.06x10 ⁻³	0.10	1	0~+1.8	1010
RD1-095SR	450	900	5000	15000	—	2.24x10 ⁻³	0.10	1	-0.5~+2.0	1050
RD1-105SR	525	1050	4500	21000	—	3.72x10 ⁻³	0.15	1	-0.9~+2.0	2050

Dimensions



Model	d1 · d2			D	L	L1 · L2	E	S	C
	Bottom Hole	Min	Max						
RD1-014SR	3	3	6.5	14	22	7	8	1	3.5
RD1-020SR	4	4	9.6	20	30	10	10	1	5
RD1-030SR	5	6	14	30	35	11	13	1.5	5.5
RD1-040SR	5	8	22	40	66	25	16	2	12.5
RD1-055SR	5	10	28	55	78	30	18	2	15
RD1-065SR	5	14	38	65	90	35	20	2.5	17.5
RD1-080SR	10	19	45	80	114	45	24	3	22.5
RD1-095SR	8	19	55	95	126	50	26	3	25
RD1-105SR	10	19	60	105	140	56	28	3.5	28

Standard Bore Diameter

Model	Standard Bore Diameter d1.d2(mm)																													
	3	4	5	6	6.35	8	9	9.525	10	11	12	14	15	16	18	19	20	24	25	28	30	32	35	38	40	42	45	50	55	60
RD1-014SR	●	●	●	●	●																									
RD1-020SR			●	●	●	●	●																							
RD1-030SR						●	●	●	●	●	●	●																		
RD1-040SR										●	●	●	●	●	●	●	●													
RD1-055SR													●	●	●	●	●	●	●											
RD1-065SR														●	●	●	●	●	●	●	●	●								
RD1-080SR																					●	●	●	●	●	●	●	●	●	●
RD1-095SR																									●	●	●	●	●	●
RD1-105SR																									●	●	●	●	●	●

Ordering Information

RD1 - 055 SR - 19 - 20 - L(78)
 OD Length
 Set Screw Type Buffer Unit Type R:Red(Hardness 97 Tight Fit)
 Bore Diameter:d1-d2