

# RD8-S TYPE

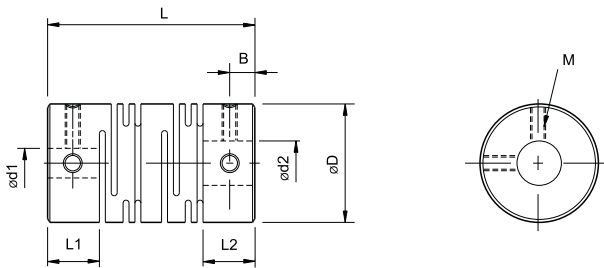
## Parallel Set Screw Fixation Type



### Parameters

Model	Rated Torque (N.m)	Max Torque (N.m)	Max Rotational Speed(rpm)	Moment of Inertia	Static Torsional Stiffness(N.m/rad)	Parallel Misalignment (mm)	Angular Misalignment(°)	Axial Misalignment (mm)	Weight(g)
RD8-8S	0.1	0.2	48000	$1.2 \times 10^{-8}$	25	0.10	2	±0.2	1.4
RD8-12S	0.2	0.4	32000	$8.3 \times 10^{-8}$	35	0.10	2	±0.3	3.7
RD8-16S	0.3	0.6	24000	$3.3 \times 10^{-7}$	47	0.10	2	±0.4	8.1
RD8-20S	0.5	1	19000	$9.0 \times 10^{-7}$	120	0.10	2	±0.4	14
RD8-25S	1	2	15000	$2.6 \times 10^{-6}$	170	0.15	2	±0.5	27
RD8-32S	2	4	12000	$9.6 \times 10^{-6}$	280	0.15	2	±0.5	60
RD8-40S	5	10	9600	$3.2 \times 10^{-5}$	350	0.20	2	±0.5	130
RD8-50S	10	20	7700	$1.0 \times 10^{-4}$	590	0.20	2	±0.5	260
RD8-63S	20	40	6100	$3.2 \times 10^{-4}$	850	0.20	2	±0.5	490
RD8-8SS	0.2	0.4	48000	$3.1 \times 10^{-9}$	50	0.10	2	±0.2	3
RD8-12SS	0.3	0.6	32000	$2.1 \times 10^{-7}$	64	0.10	2	±0.3	9.3
RD8-16SS	0.5	1	24000	$8.4 \times 10^{-7}$	85	0.10	2	±0.3	21
RD8-20SS	1	2	19000	$2.4 \times 10^{-6}$	250	0.10	2	±0.3	38
RD8-25SS	2	4	15000	$6.8 \times 10^{-6}$	330	0.15	2	±0.4	71
RD8-32SS	3.5	7	12000	$2.6 \times 10^{-5}$	850	0.15	2	±0.5	160
RD8-40SS	8	16	9600	$8.7 \times 10^{-5}$	1000	0.20	2	±0.5	350
RD8-50SS	15	30	7700	$2.7 \times 10^{-4}$	1400	0.20	2	±0.5	700
RD8-63SS	35	70	6100	$8.4 \times 10^{-4}$	1800	0.20	2	±0.5	1300

### Dimensions



Unit (mm)

Model	D	L1 · L2	L	B	M	Tightening Torque(N.m) [N·m]	Standard Bore Diameter d1.d2(mm)													
							2×2	2×3	3×3	4×4	4×5	4 <sup>5</sup> ×5	5×5	5×6	5×7	5×8				
RD8-8S	8	3.5	14	1.7	M2	0.3	2×2	2×3	3×3	4×4	4×5	4 <sup>5</sup> ×5	5×5	5×6						
RD8-12S	12	5	18.5	2.5	M2.5	0.5	3×3	3×4	4×4	4×5	4 <sup>5</sup> ×5	4 <sup>5</sup> ×6	5×5	5×6	5×7					
RD8-16S	16	6.5	23	3	M3	0.7	4×4	4×5	4×6	4×5	4 <sup>5</sup> ×5	4 <sup>5</sup> ×6	5×5	5×6	5×7	5×8				
RD8-20S	20	7.5	26	3	M3	0.7	5×5	5×6	5×7	6×6	6×6 <sup>35</sup>	6×7	6×8	6×8	6×10	6 <sup>35</sup> ×8	6 <sup>35</sup> ×10	8×8		
RD8-25S	25	8.5	31	4	M4	1.7	5×6	6×6	6×6 <sup>35</sup>	6×8	6×10	6 <sup>35</sup> ×8	6 <sup>35</sup> ×10	8×8	8×10	9 <sup>525</sup> ×10	9 <sup>525</sup> ×12	12×12		
RD8-32S	32	12	41	6	M4	1.7	6×8	6 <sup>35</sup> ×8	8×8	8×9 <sup>525</sup>	8×10	8×12	9 <sup>525</sup> ×10	9 <sup>525</sup> ×12	12×12	14×14	14×16	14×18		
RD8-40S	40	17	56	8.5	M5	4	8×9 <sup>525</sup>	9 <sup>525</sup> ×10	9 <sup>525</sup> ×12	10×10	12×12	14×14	14×16	16×16	18×18					
RD8-50S	50	21	71	10.5	M6	7	12×12	12×14	14×14	14×16	15×15	16×16	18×18							
RD8-63S	63	26	90	13	M8	15	14×14	15×15	16×16	18×18										
RD8-8SS	8	3.5	14	1.7	M2	0.3														
RD8-12SS	12	5	18.5	2.5	M2.5	0.5														
RD8-16SS	16	6.5	23	3	M3	0.7	5×8	6×6	6×6 <sup>35</sup>	6×7	6×8	6 <sup>35</sup> ×8								
RD8-20SS	20	7.5	26	3	M3	0.7	6 <sup>35</sup> ×8	8×8	8×9 <sup>525</sup>	8×10	9 <sup>525</sup> ×10	10×10								
RD8-25SS	25	8.5	31	4	M4	1.7	8×9 <sup>525</sup>	8×10	8×12	9 <sup>525</sup> ×10	10×10	10×11	10×12	12×12						
RD8-32SS	32	12	41	6	M4	1.7	10×10	10×11	10×12	10×14	12×12	12×14	14×14	14×16						
RD8-40SS	40	17	56	8.5	M5	4	15×15	16×16	16×18	18×18										
RD8-50SS	50	21	71	10.5	M6	7														
RD8-63SS	63	26	90	13	M8	15														

### Ordering Information

